


## Bentley 294



  
4 Bedrooms

  
2 Living

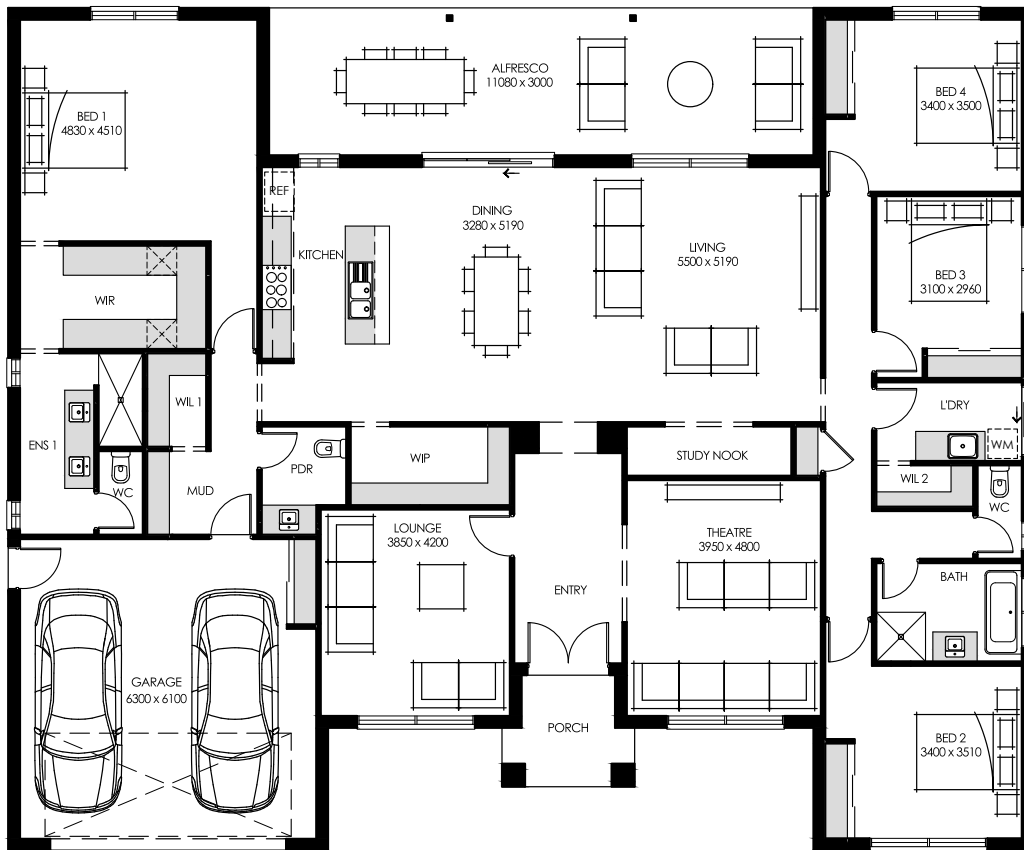
  
2.5 Bathrooms






  
2 Carparks

  
1 Alfresco

Living Area	Garage	Alfresco	Porch	TOTAL	House Width	House Length
226.59M <sup>2</sup>	39.70M <sup>2</sup>	22.10M <sup>2</sup>	5.19M <sup>2</sup>	293.58M <sup>2</sup>	23.60M	20.34M

## Bentley 337



-   
 4 Bedrooms
-   
 3 Living
-   
 2.5 Bathrooms
-   
 2 Carparks
-   
 1 Alfresco

Living Area	Garage	Alfresco	Porch	TOTAL	House Width	House Length
256.63M <sup>2</sup>	41.20M <sup>2</sup>	33.24M <sup>2</sup>	5.27M <sup>2</sup>	336.34M <sup>2</sup>	24.00M	20.87M


## Bentley 392



  
5 Bedrooms  
+ Study

  
2 Living

  
3 Bathrooms

  
2 Carparks

  
1 Alfresco

Living Area	Garage	Alfresco	Porch	TOTAL	Block Width	House Length
320.35M <sup>2</sup>	43.90M <sup>2</sup>	20.78M <sup>2</sup>	6.47M <sup>2</sup>	392.00M <sup>2</sup>	26.00M	23.09M